

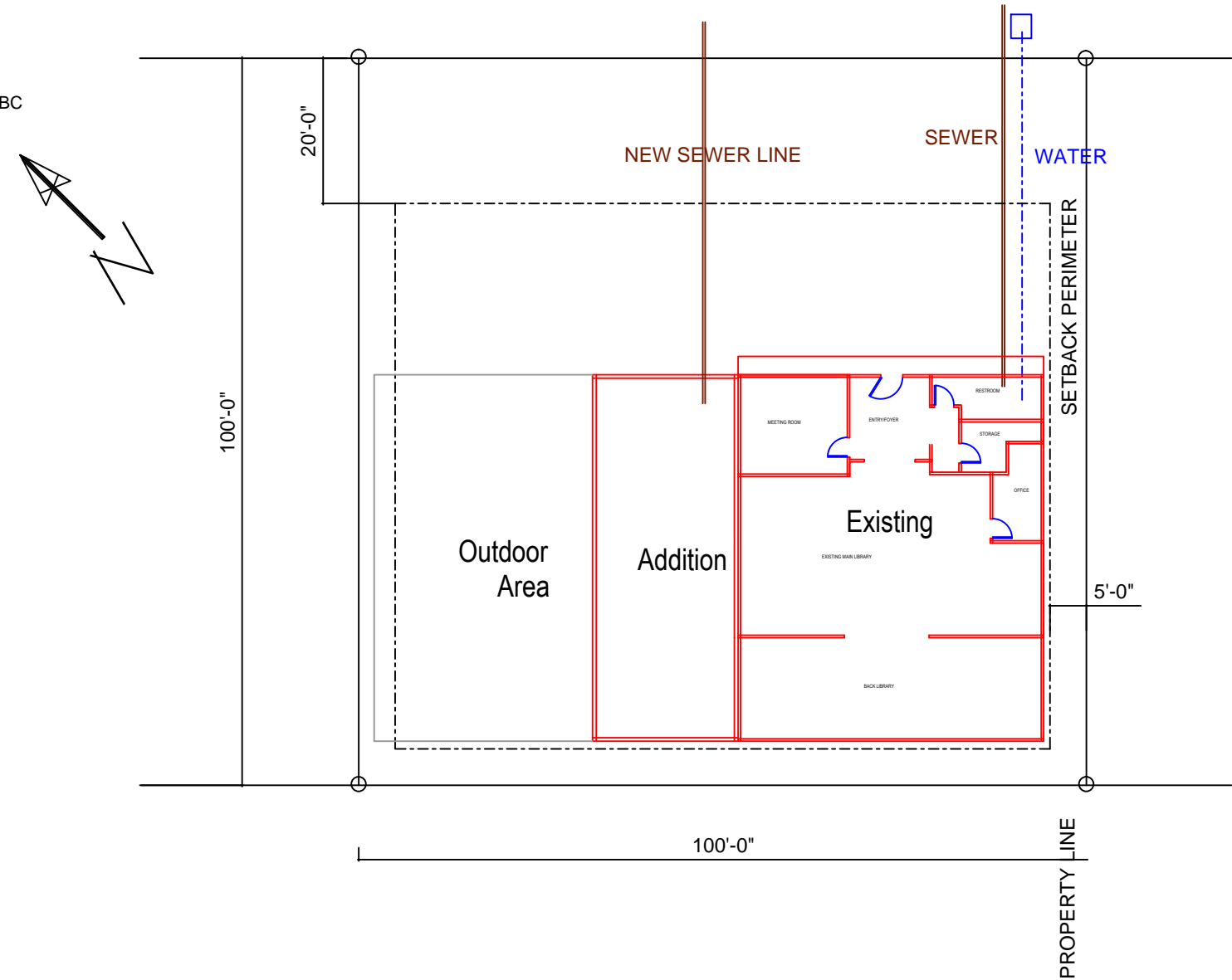
SUMMARY:

EXISTING STRUCTURE	2118 SF
ADDITION	1008 SF
OUTDOOR AREA	1512 SF

GENERAL REQUIREMENTS:

1. CONSTRUCTION IN ACCORDANCE WITH PLANS, IBC AND ASSOCIATED REFERENCE CODES.
2. ENERGY CERTIFICATION PER 2018 IECC.
3. DESIGN CRITERIA
 - FROST DEPTH = 24 INCHES
 - WIND LOAD = 115 MPH (EXPOSURE B)
 - SEISMIC = ZONE D
 - CLIMATE = ZONE 6
 - FLOOR LIVE LOAD = 150 PSF
 - FLOOR DEAD LOAD = 10 PSF
 - ROOF SNOW LOAD = 100 PSF
 - ROOF DEAD LOAD = 17 PSF
 - SOIL BEARING = 1500 PSF (MINIMUM)
4. SETBACKS (RESIDENTIAL ZONE C)
 - FRONT = 20'
 - SIDE (INTERIOR) = 5'
 - SIDE (STREET) = 5'
 - BACK = 5'
5. INSPECTION REQUIREMENTS
 - EXCAVATION/SOILS
 - FOOTINGS/HOLES
 - FOUNDATION
 - SLAB
 - WALL AND ROOF SHEATHING
 - ICE/WATER SHIELD
 - FRAME
 - INSULATION
 - ELECTRICAL/PLUMBING/HVAC
 - FINAL
6. INSULATION (TYPICAL)
 - 2X6 EXTERIOR WALLS = R19+10
 - 8" FOUNDATION WALLS = R20 (EXTERIOR)
 - ROOF ASSEMBLY = R30+10
 - DOORS U-FACTOR = .50
 - WINDOWS U-FACTOR = .27

105 N Front Street



Cascade Public Library
 105 N Front Street
 Cascade, ID 83611
 (208)382-4757

COMMENT

REV BY DATE

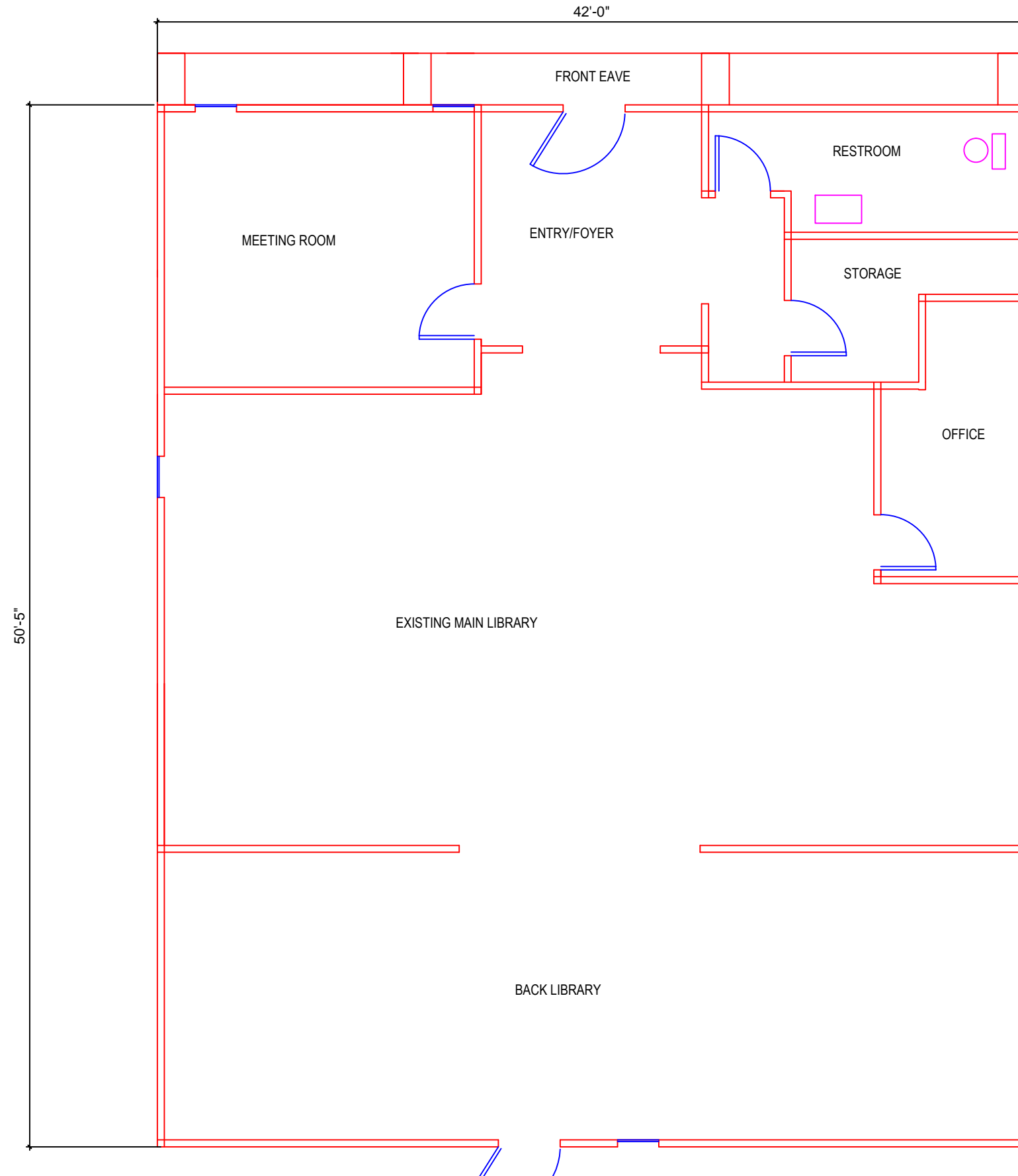
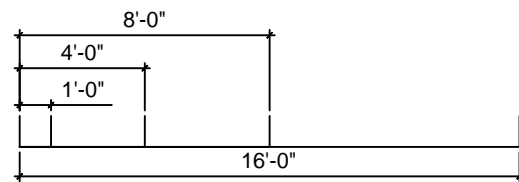
PROJECT #:

SERVICE #:

SHEET

of

EXISTING STRUCTURE

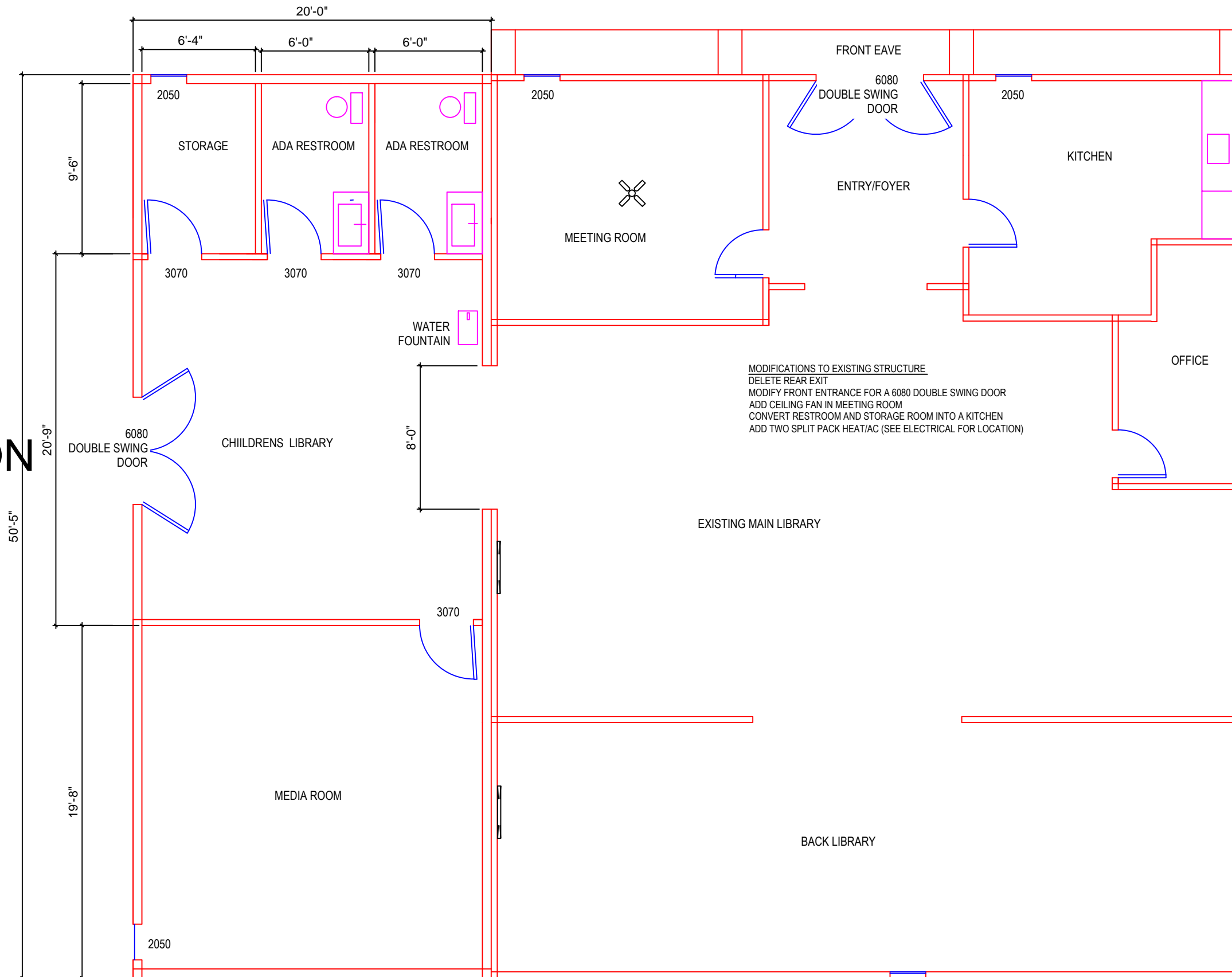


CASCADE PUBLIC LIBRARY
105 N Front Street
Cascade, ID 83611
(208) 382-4757

REV	BY	DATE	COMMENT
<<	<<	<<	<<
<<	<<	<<	<<
<<	<<	<<	<<
<<	<<	<<	<<
<<	<<	<<	<<
<<	<<	<<	<<
<<	<<	<<	<<
<<	<<	<<	<<
<<	<<	<<	<<
<<	<<	<<	<<

PROJECT #:
SERVICE #:
SHEET
_ of _

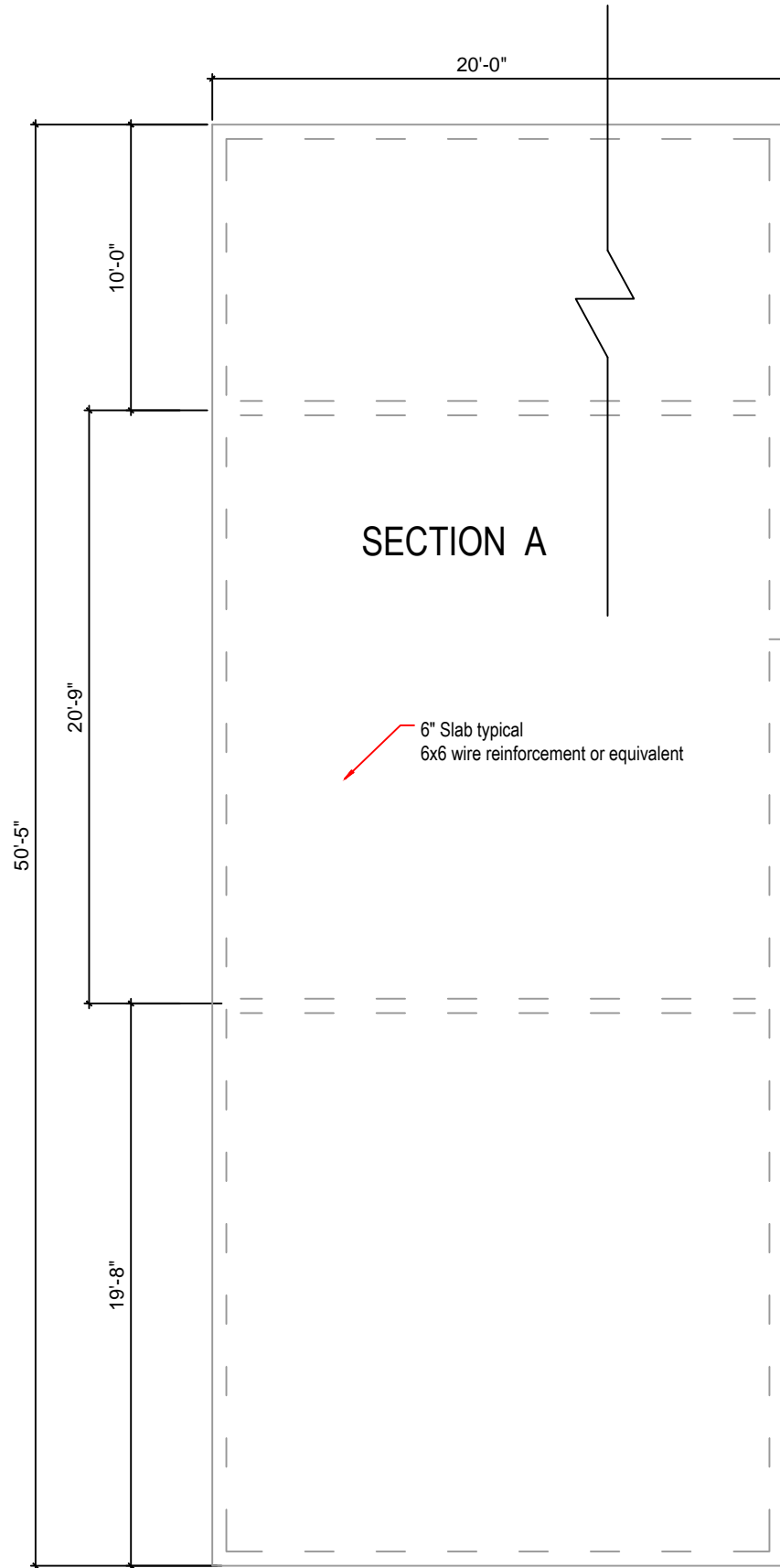
EXISTING STRUCTURE MODIFICATION WITH ADDITION



CASCADE PUBLIC LIBRARY
 105 N Front Street
 Cascade, ID 83611
 (208) 382-4757

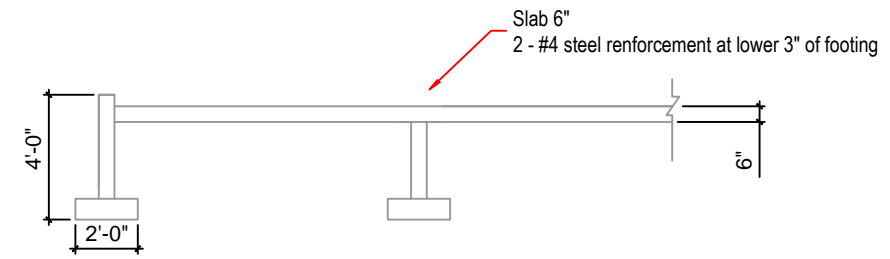
REV	BY	DATE	COMMENT

PROJECT #:
 SERVICE #:
 SHEET
 _ of _



Addition Foundation

SECTION A



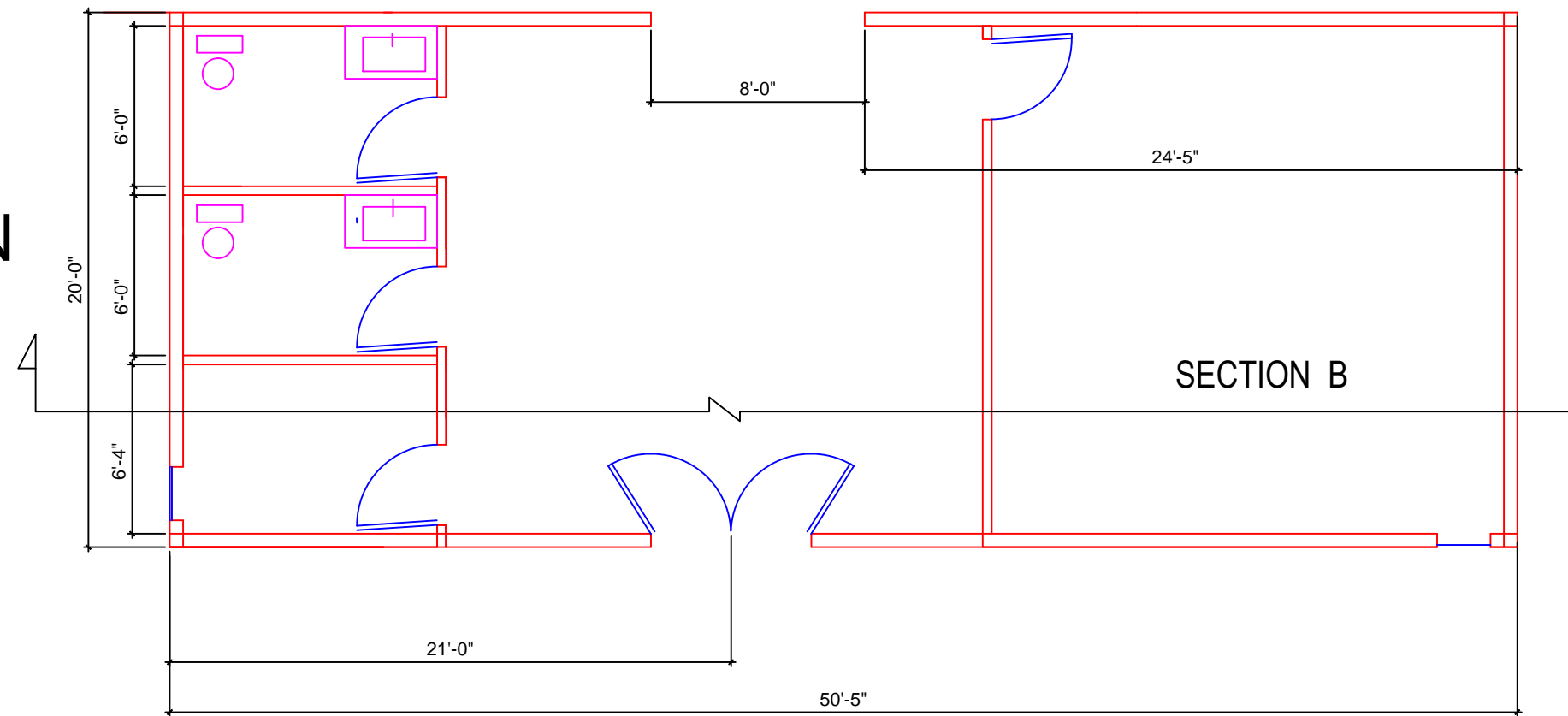
CASCADE PUBLIC LIBRARY
105 N Front Street
Cascade, ID 83611
(208) 382-4757

REV	BY	DATE	COMMENT

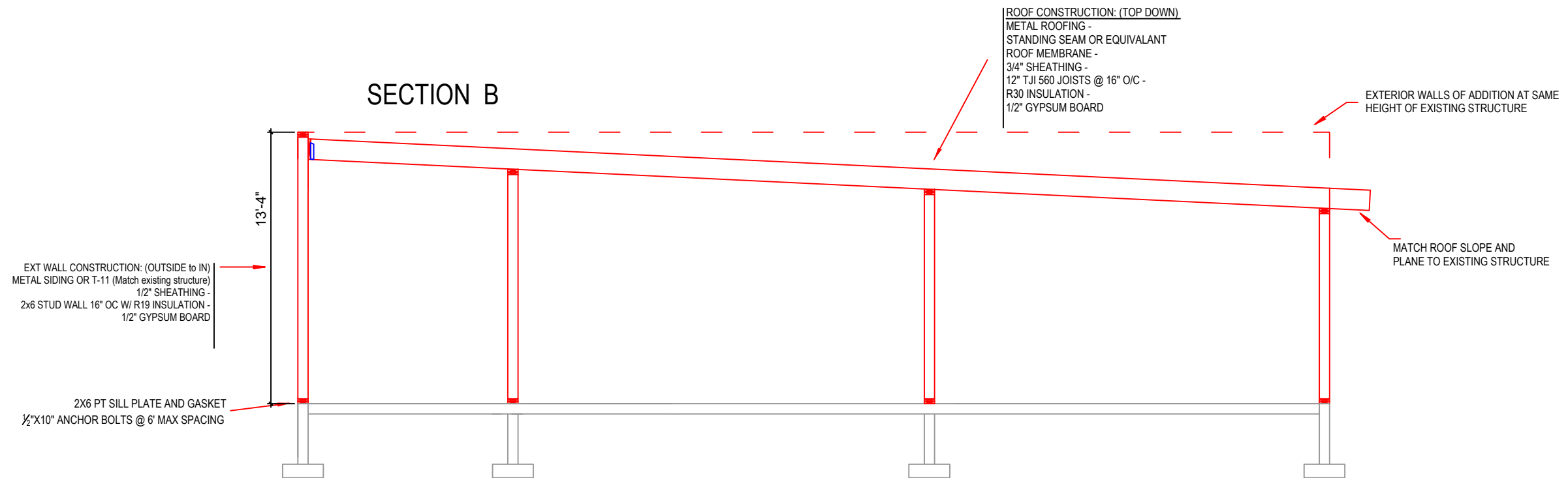
REV	BY	DATE	COMMENT

PROJECT #:
SERVICE #:
SHEET
_ of _

ADDITION



SECTION B



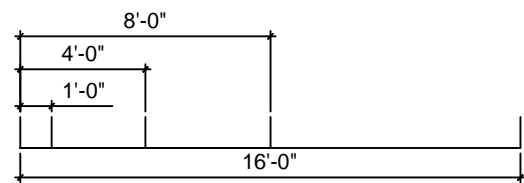
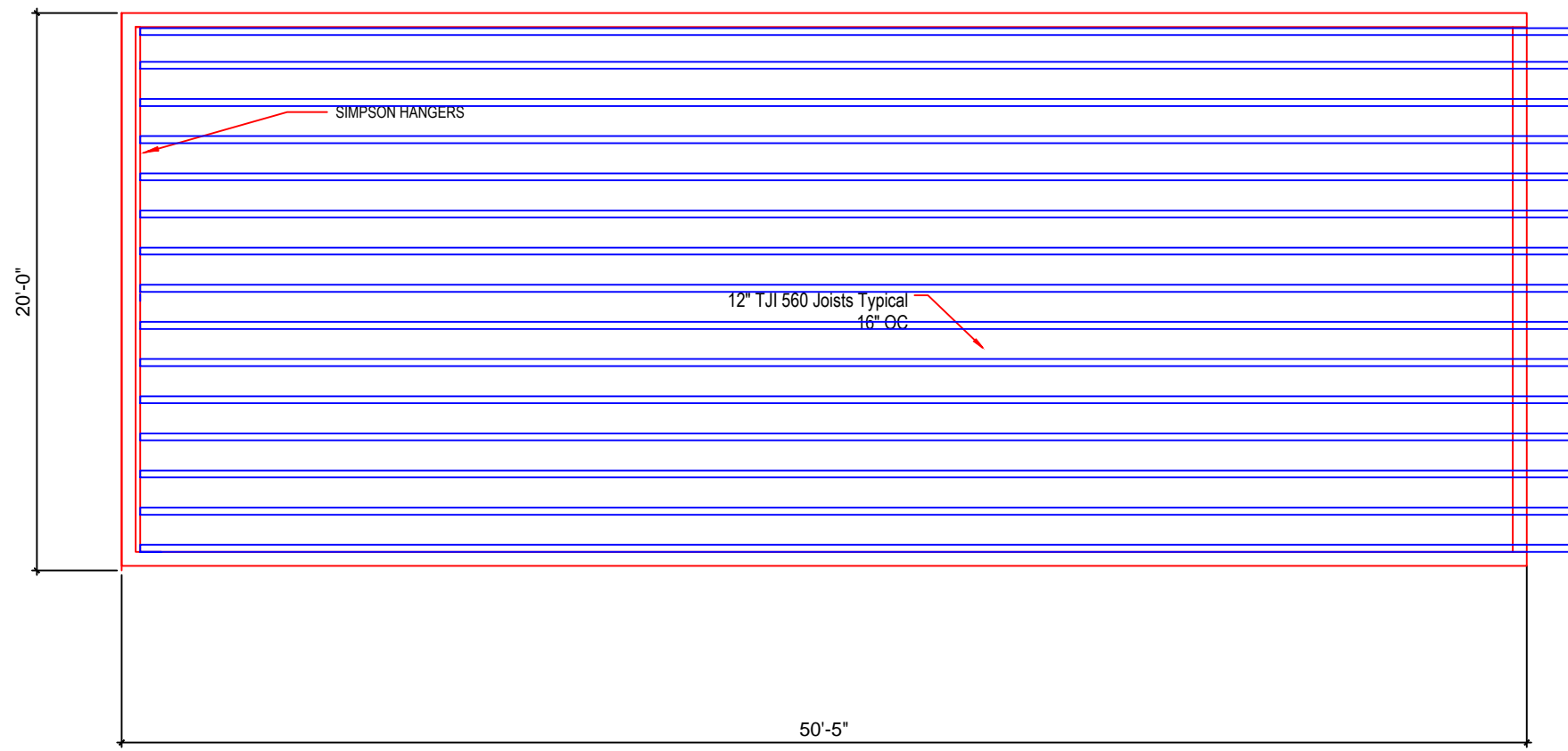
CASCADE PUBLIC LIBRARY
 105 N Front Street
 Cascade, ID 83611
 (208) 382-4757

--	--	--	--	--	--	--	--	--	--

REV	BY	DATE	COMMENT

PROJECT #:
 SERVICE #:
 SHEET
 _ of _

ROOF LAYOUT

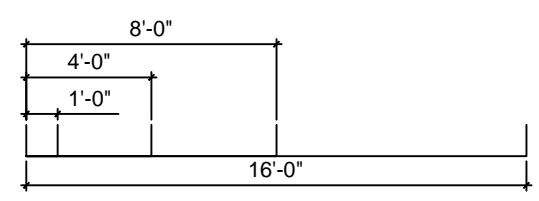
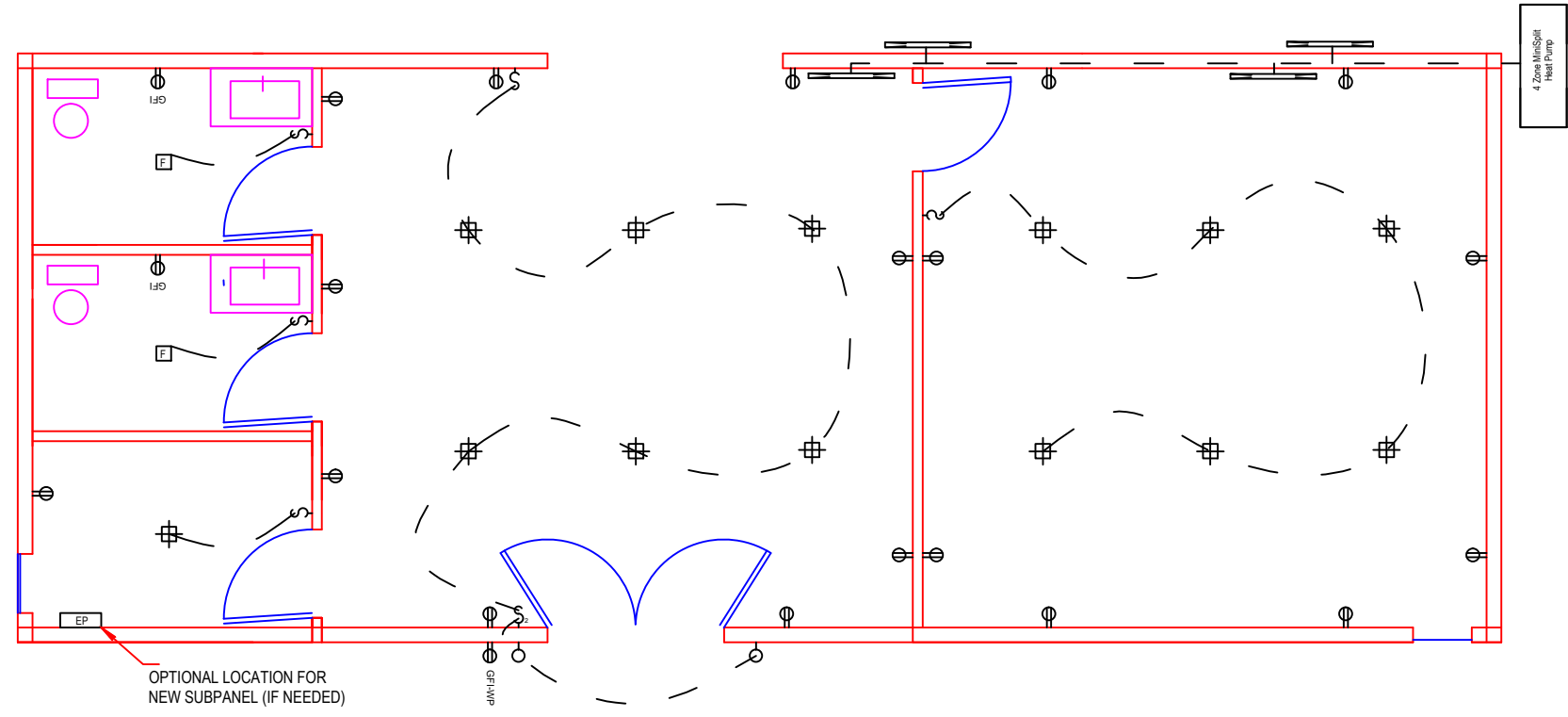


CASCADE PUBLIC LIBRARY
 105 N Front Street
 Cascade, ID 83611
 (208) 382-4757

REV	BY	DATE	COMMENT
<<<<<<			
<<<<<<			
<<<<<<			
<<<<<<			

PROJECT #:
 SERVICE #:
 SHEET
 _ of _

ELECTRICAL



ELECTRICAL OUTLET LEGEND		
1.		110V RECEPTICAL
2.		SWITCH RECEPTICAL
3.		GROUND FAULT CURRENT INTERRUPTER RECEPTICAL
4.		GFI AND WATER PROOF RECEPTICAL
5.		MICROWAVE OVEN RECEPTICAL
6.		RANGE RECEPTICAL
7.		UNDER COUNTER RECEPTICAL
8.		240V RECEPTICAL

ELECTRICAL SWITCH LEGEND		
9.		LIGHT SWITCH
10.		DOUBLE LIGHT SWITCH
11.		3-WAY LIGHT SWITCH
12.		

LIGHTING LEGEND		
13.		DOWN LIGHT
14.		RECESSED DOWN LIGHT ENERGY STAR RATED
15.		FLOURESCENT LIGHT FIXTURE
16.		BATHROOM EXHAUST FAN & LIGHT
17.		WALL MOUNTED FIXTURE
18.		CEILING FAN

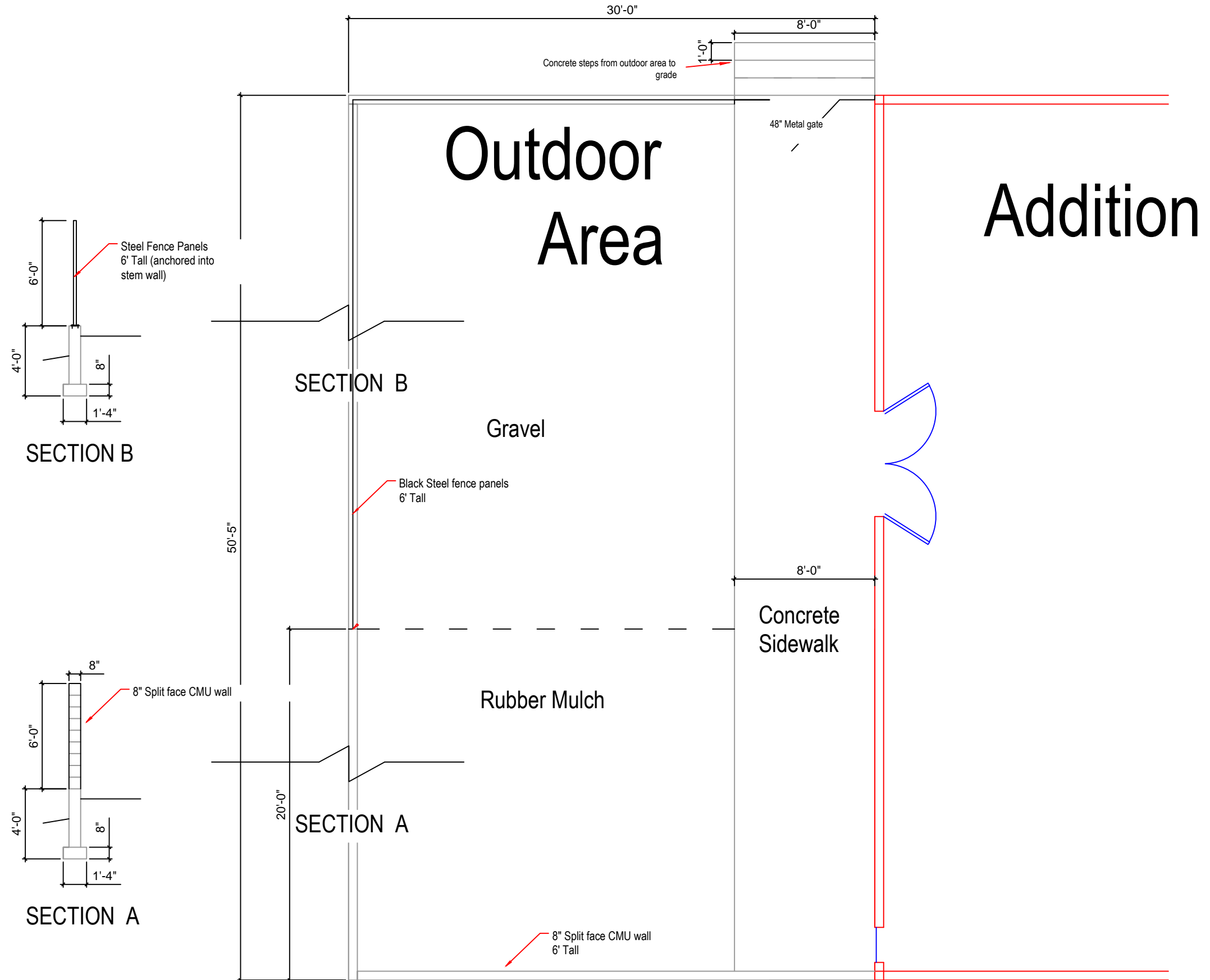
19.		HEIATAC UNIT
20.		SMOKE & CARBON MONOXIDE DETECTOR
21.		DUCTLESS HEIATAC UNIT
22.		TANKLESS WATER HEATER
23.		ELECTRIC PANEL

CASCADE PUBLIC LIBRARY
 105 N Front Street
 Cascade, ID 83611
 (208) 382-4757

REV	BY	DATE	COMMENT

PROJECT #:
 SERVICE #:
 SHEET
 _ of _

LANDSCAPE PLAN



CASCADE PUBLIC LIBRARY
 105 N Front Street
 Cascade, ID 83611
 (208) 382-4757

--	--

--	--	--	--	--	--	--	--

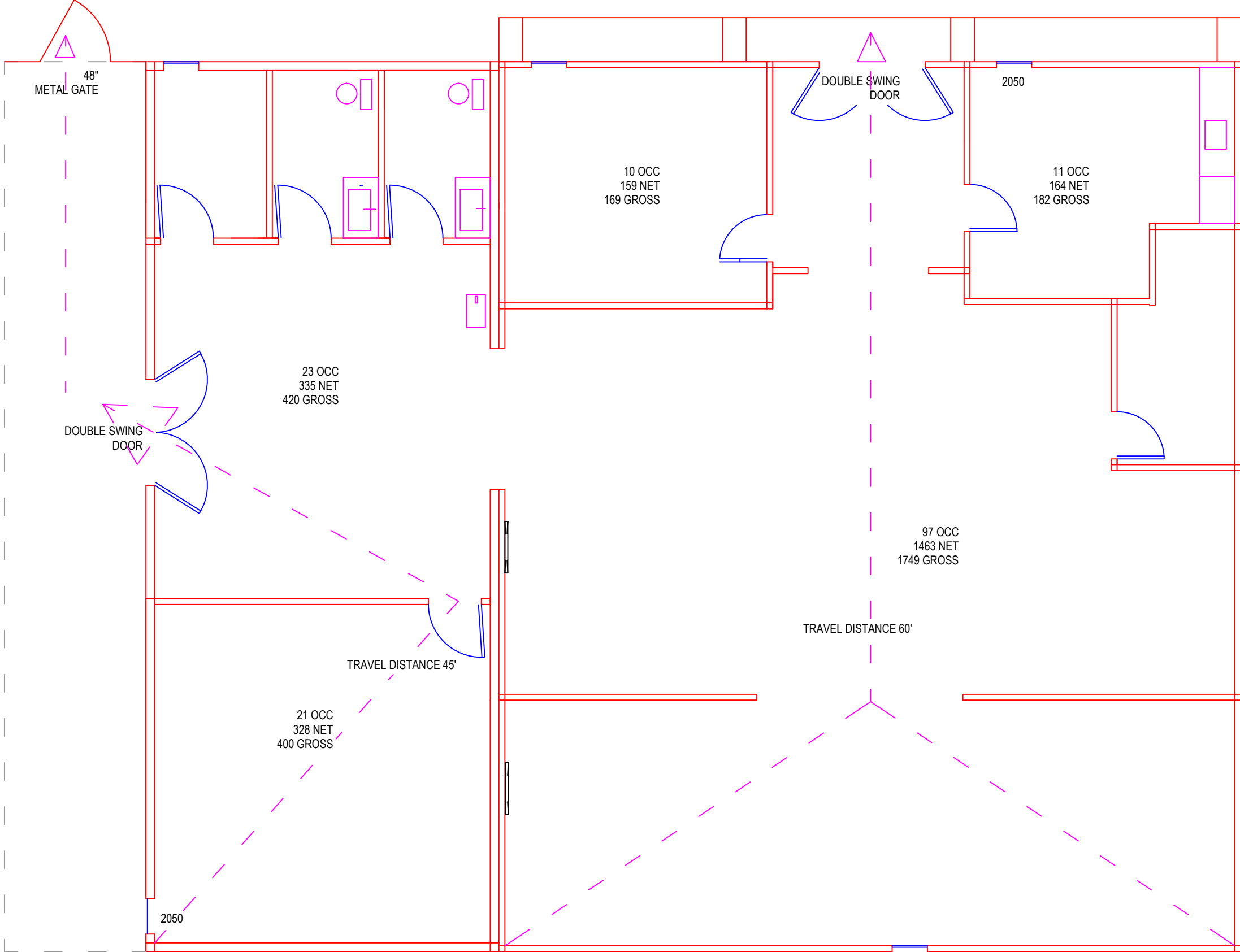
REV	BY	DATE	COMMENT

PROJECT #:
 SERVICE #:
 SHEET
 _ of _

EGRESS PLAN

162 TOTAL OCCUPANTS

OUTDOOR OCCUPANCY 39
(592 NET, 1500 GROSS)



CASCADE PUBLIC LIBRARY
105 N Front Street
Cascade, ID 83611
(208) 382-4757

REV	BY	DATE	COMMENT
<<<<<			

PROJECT #:
SERVICE #:
SHEET
_ of _